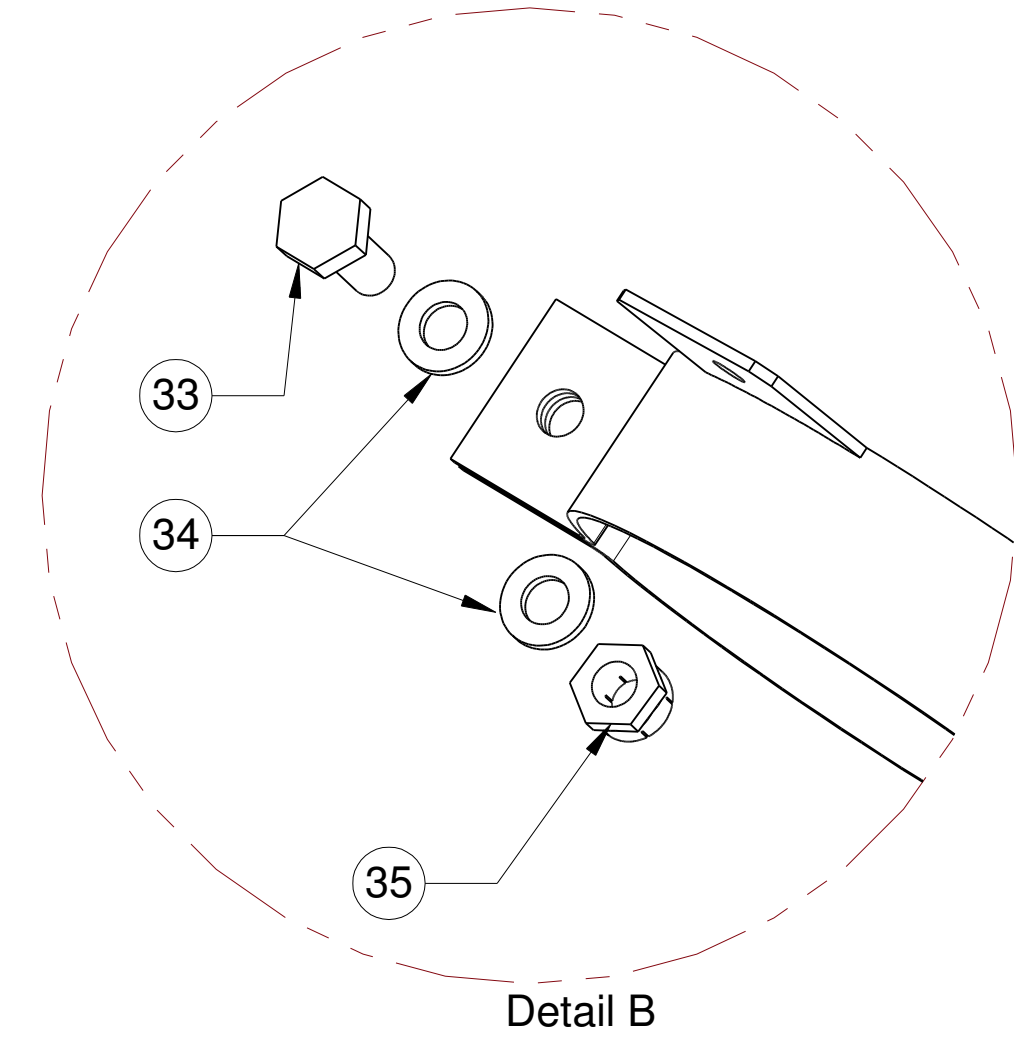
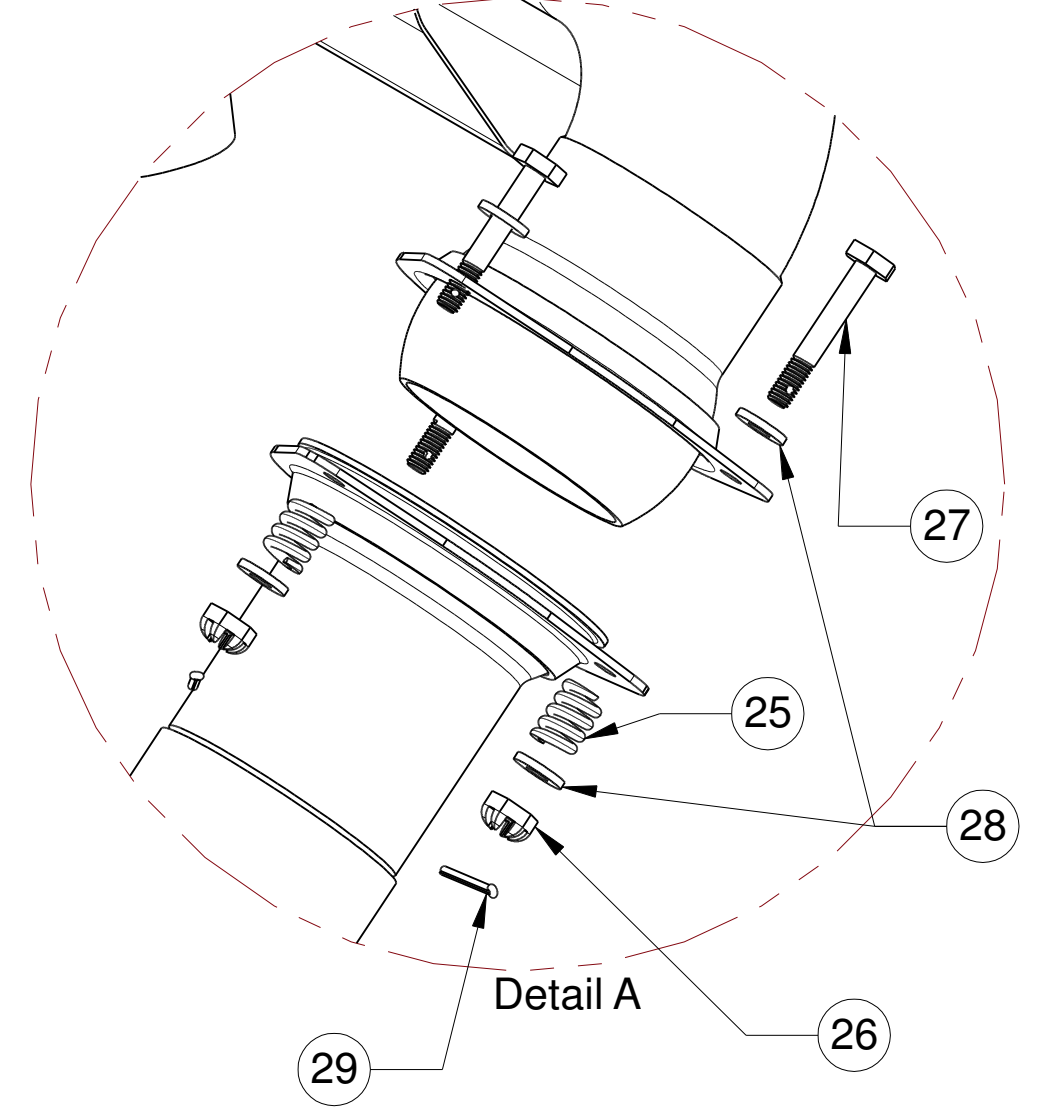
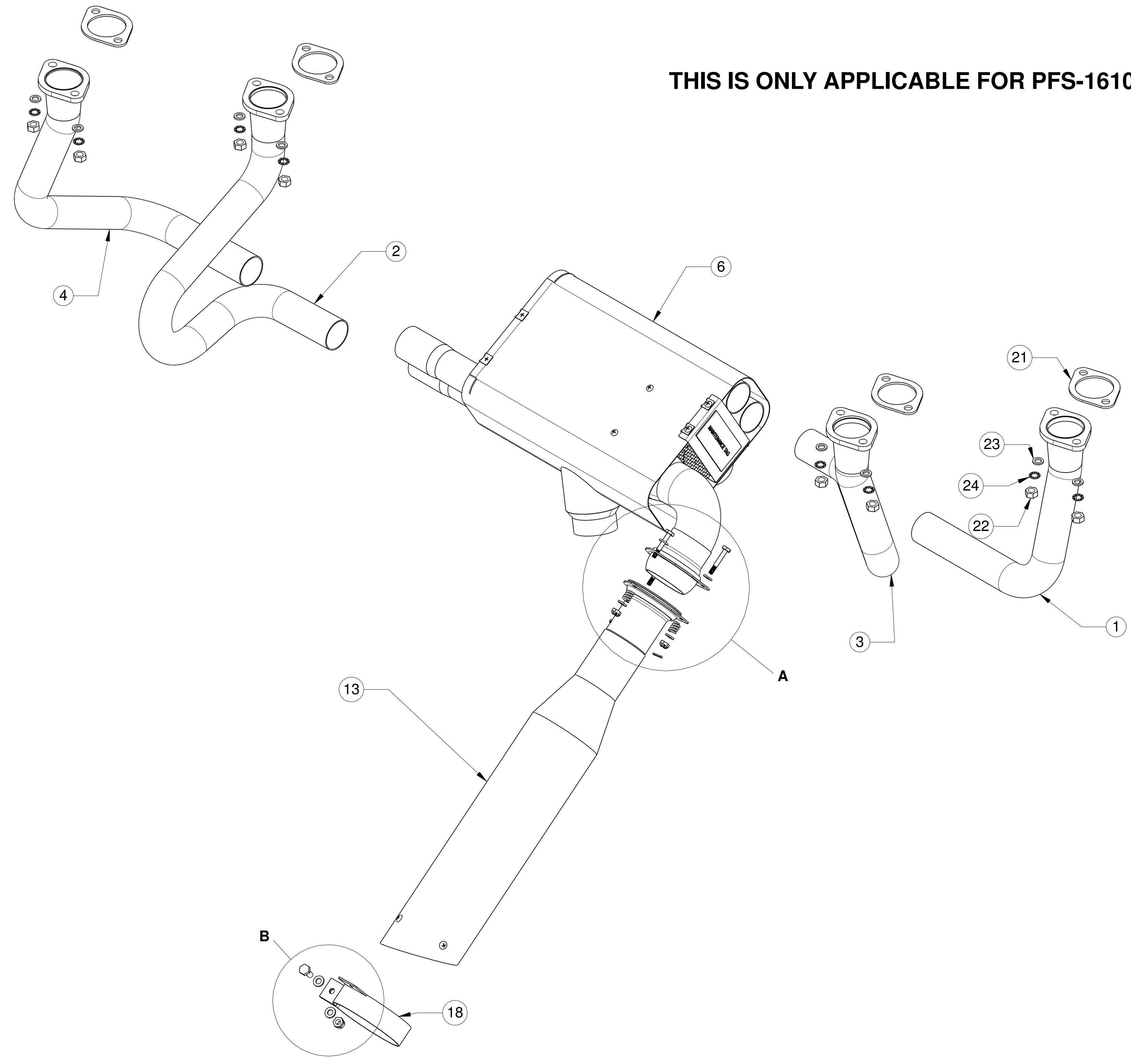



REVISIONS		
REV	DESCRIPTION	DATE

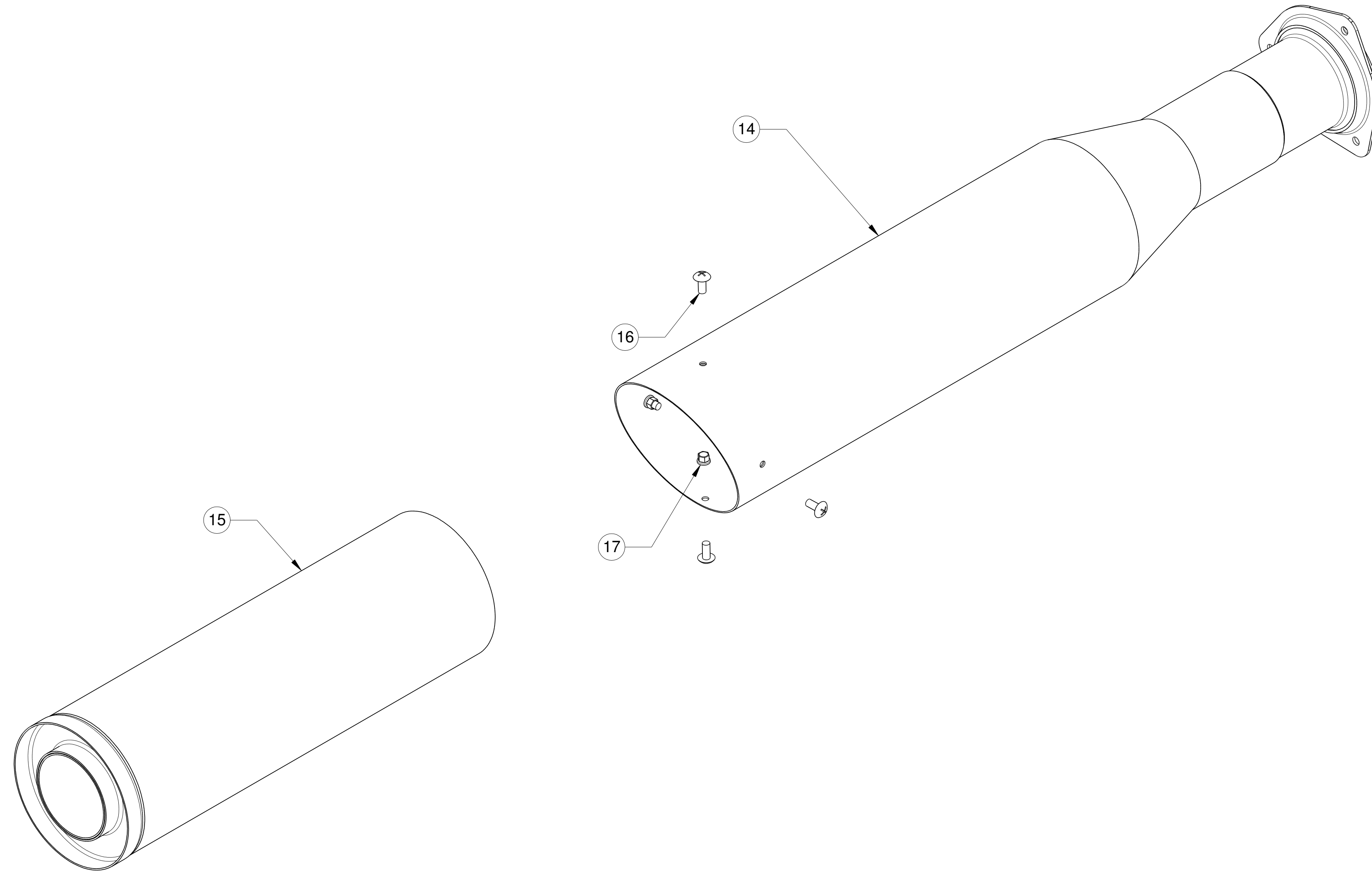
THIS IS ONLY APPLICABLE FOR PFS-16101




ANY EQUIVALENT AVIATION GRADE HARDWARE MAY BE USED

TOLERANCES EXCEPT AS NOTED XX --± 0.1 0 --± 2 X.XX --± 0.063 0.0 --± 1 X.XXX --± 0.010 0.00 --± 0.5	DRAWN ES	DATE 11/9/2018	POWER FLOW SYSTEMS, INC. 1585 AVIATION CENTER PKWY HANGAR 804 DAYTONA BEACH, FL 32114 
	CHECKED		
ALL INFORMATION CONTAINED IN THIS DRAWING IS PROPRIETARY TO POWER FLOW SYSTEMS, INC.	DWG NO. PFS-16101-IPC	DWG TITLE SYSTEM ASSEMBLY	REV IR
SIZE D	SCALE	STOCK SIZE	MATERIAL SHEET 1 OF 4

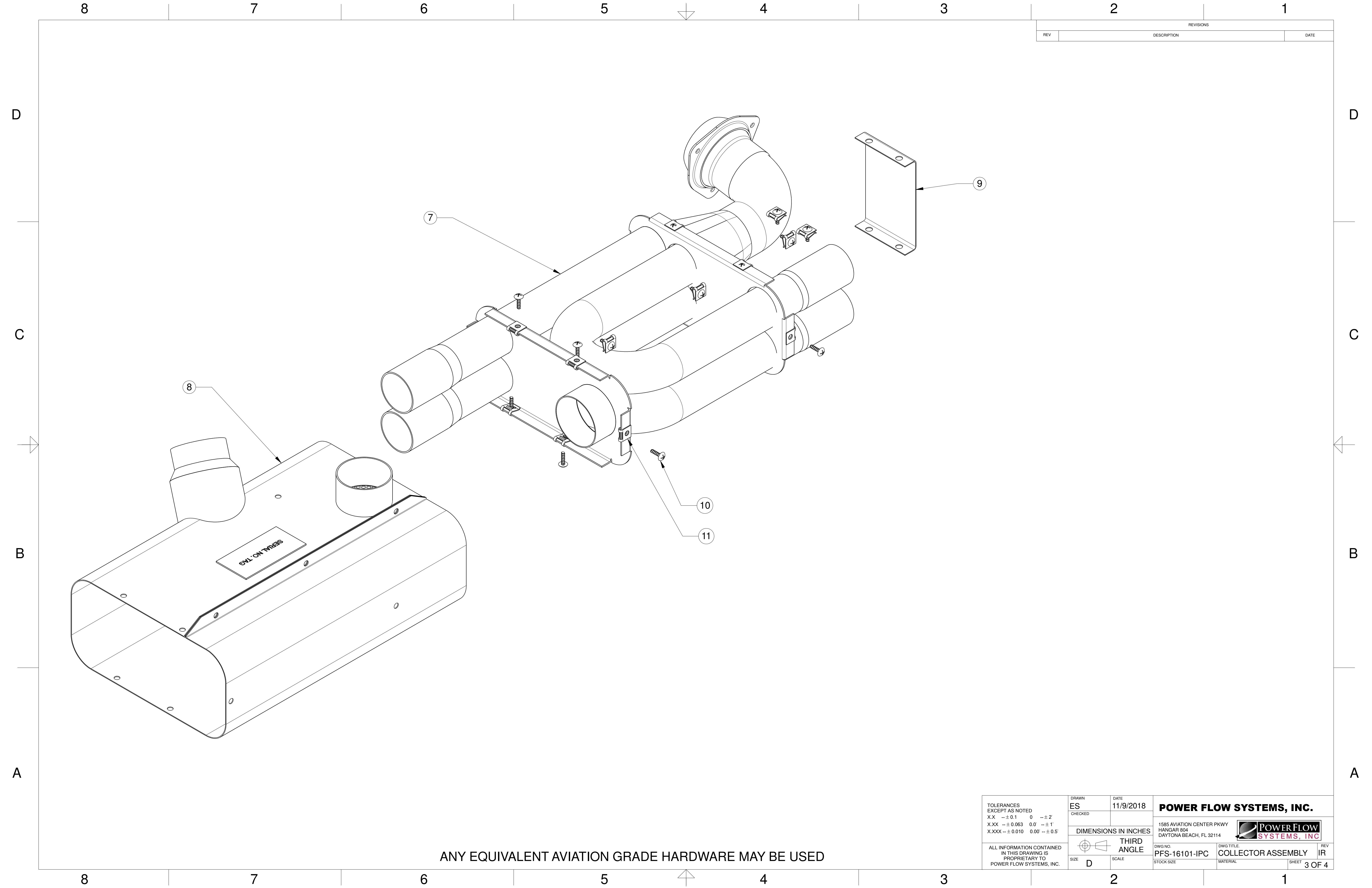
REVISIONS		
REV	DESCRIPTION	DATE




TAILPIPE IS AVAILABLE IN BOTH A POLISHED AND CERAMIC FINISHES
 ANY EQUIVALENT AVIATION GRADE HARDWARE MAY BE USED

TOLERANCES EXCEPT AS NOTED XX ±0.1 0 ±2 XXX ±0.063 0.0 ±1 XXXX ±0.010 0.00 ±0.5	DRAWN ES	DATE 11/9/2018	POWER FLOW SYSTEMS, INC. 1585 AVIATION CENTER PKWY HANGAR 804 DAYTONA BEACH, FL 32114 
	CHECKED		
ALL INFORMATION CONTAINED IN THIS DRAWING IS PROPRIETARY TO POWER FLOW SYSTEMS, INC.	DIMENSIONS IN INCHES THIRD ANGLE		DWG NO. PFS-16101-IPC
	SIZE D	SCALE	DWG TITLE TAILPIPE ASSEMBLY
			STOCK SIZE MATERIAL SHEET 2 OF 4

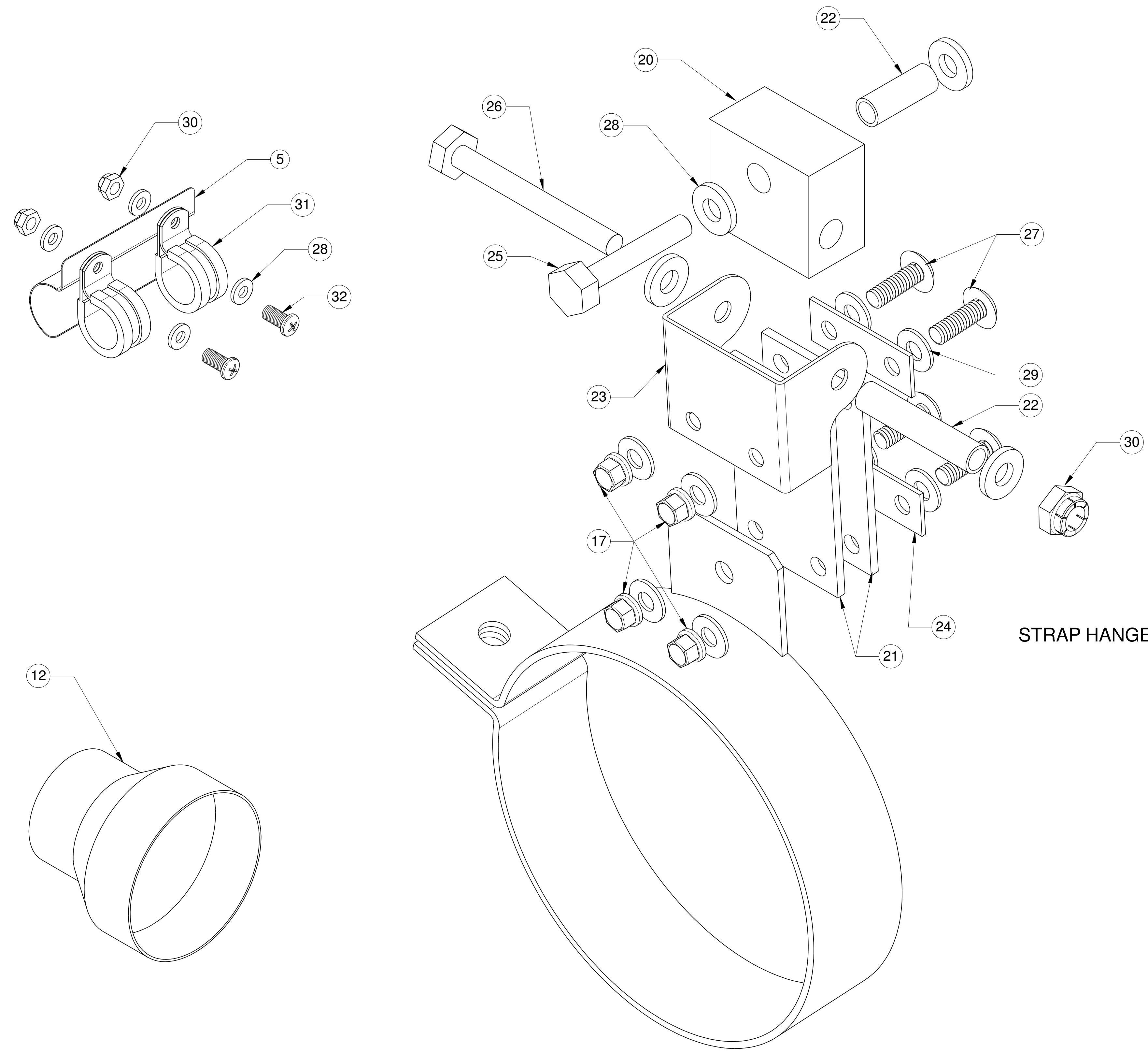
REVISIONS		
REV	DESCRIPTION	DATE



ANY EQUIVALENT AVIATION GRADE HARDWARE MAY BE USED


TOLERANCES EXCEPT AS NOTED XX --± 0.1 0 --± 2 X.XX --± 0.063 0.0 --± 1 X.XXX --± 0.010 0.00 --± 0.5	DRAWN ES	DATE 11/9/2018	POWER FLOW SYSTEMS, INC. 1585 AVIATION CENTER PKWY HANGAR 804 DAYTONA BEACH, FL 32114 	
	CHECKED	DIMENSIONS IN INCHES THIRD ANGLE		DWG NO. PFS-16101-IPC
ALL INFORMATION CONTAINED IN THIS DRAWING IS PROPRIETARY TO POWER FLOW SYSTEMS, INC.	SIZE D	SCALE	STOCK SIZE MATERIAL	REV IR

REV		DESCRIPTION	DATE



STRAP HANGER ASSEMBLY

ANY EQUIVALENT AVIATION GRADE HARDWARE MAY BE USED

TOLERANCES EXCEPT AS NOTED XX --± 0.1 0 --± 2 XXX --± 0.063 0.0 --± 1 X.XXX --± 0.010 0.00 --± 0.5	DRAWN ES	DATE 11/9/2018	POWER FLOW SYSTEMS, INC. 1585 AVIATION CENTER PKWY HANGAR 804 DAYTONA BEACH, FL 32114 
	CHECKED		
ALL INFORMATION CONTAINED IN THIS DRAWING IS PROPRIETARY TO POWER FLOW SYSTEMS, INC.	SIZE D	SCALE	DWG NO. PFS-16101-IPC STOCK SIZE
			DWG TITLE OTHER ASSEMBLIES MATERIAL
			REV IR SHEET 4 OF 4

PFS-16101 IPC BOM

NOTE: COMMONLY ORDERED PARTS ARE BOLDED

Item	Part number	Description	Qty Per Assy	HW Pack #	Comment
1	11600	HEADER #1	1		
2	12600	HEADER #2	1		
3	13600	HEADER #3	1		
4	14600	HEADER #4	1		
5	2001	HEAT SHIELD	1		
6	41601	SHROUDED COLLECTOR, MOONEY	1		
7	38002	COLLECTOR ASSEMBLY	1		INC. IN PFS-41601 OR PFS-38002
8	50600	SHROUD SUBASSY, M20	1		INC. IN PFS-41601 OR PFS-50600
9	6801	SHROUD ENDPLATE	1		INC. IN PFS-41601 OR PFS-50600
10	8Rx3/8THBSS	SHROUD SCREW	17		INC. IN PFS-41601, PFS-50600, OR PFS- 38002
11	D1274-8-1	TINNERMAN CLIP	17		INC. IN PFS-41601, PFS-50600, OR PFS- 38002
12	6583	REDUCER 3IN TO 2IN	1		OPTIONAL - 3" DIA. COLD AIR SOURCE ONLY
13	80060-CER	STUFFED MUFFLER, M20, CERAMIC	1		
13	80060	STUFFED MUFFLER ASSEMBLY - POLISHED	1		
14	8060	MUFFLER BODY, M20	1		INC. IN 80060
15	8016	WRAPPED MUFFLER INSERT	1		INC. IN 80060 OR PFS-8016
16	AN526C832R6	SCREW, #8 x 3/8, CRES	4		INC. IN 80060 OR PFS-8016
17	MS21042L08	NUT, LOCKING, #8	4		INC. IN 80060 OR PFS-8016
18	8031	CLAMP, MUFFLER, M20 BEAD BLASTED	1		
19	90060	STRAP HANGER ASSY	1		OPTIONAL- ONLY REQ'D IF SPRING HANGER INSTALLED
20	90060-1	BAR, 2024T351 CF, 0.625x1.00	1		INC. IN 90060
21	214	NEOPRENE STRAP, PFS-16101	2		INC. IN 90060
22	90060-4, 90060-5	0.25x0.028 304 SS TUBE	2		INC. IN 90060
23	90060-2	SWIVEL	1		INC. IN 90060
24	90060-6	TAB, STAP HANGER, M20	2		INC. IN 90060
25	AN3-11A	BOLT, 10-32x1 5/32, UNDRILLED	1		INC. IN 90060
26	AN3-16A	BOLT, 10-32x1 25/32, UNDRILLED	1		INC. IN 90060
27	AN526C832R8	SCREW, #8 x 1/2, CRES	4		INC. IN 90060
28	AN960-10	WASHER, PLAIN, 3/16, CRES	4		INC. IN 90060
29	AN960C8	WASHER, PLAIN, 1/8, CRES	8		INC. IN 90060
	17 MS21042L08	NUT, LOCKING, #8	4		INC. IN 90060
30	MS21045C3	NUT, LOCKING, 3/16, CRES	1		INC. IN 90060
	10310	HW PACK, HEADER GASKETS	1		

PFS-16101 IPC BOM

31		77611	LYCOMING EXHAUST GASKET	4	10310	
32		94819A046	ASTM F594 S/S HEX NUT 5/16-18	8	10310	
33		AN960-516	WASHER, PLAIN, 5/16	8	10310	
34		MS35333-41	WASHER LOCKING, 5/16	8	10310	
	10360		HW PACK, BALLJOINT	1		
35		33703	BALL JOINT SPRING	3	10360	
36		AN310C3	NUT, CASTLE, 3/16, CRES	3	10360	
37		AN3C12	BOLT, 10-32, CRES	3	10360	
38		AN960C10	WASHER, PLAIN, 3/16, CRES	6	10360	
39		MS24665-153	COTTER PIN	3	10360	
	10361		HW PACK, M20 HEAT SHIELD	1		
	38	AN960C10	WASHER, PLAIN, 3/16, CRES	4	10361	
	30	MS21045C3	NUT, LOCKING, 3/16, CRES	2	10361	
40		MS21919WH6	CLAMP, ADEL, 3/8	2	10361	
41		MS51958-63	SCREW, PANHEAD, #10x1/2"	2	10361	
	10362		HW PACK, CLAMP	1		
42		AN4C5A	BOLT, 1/4IN, UNDRILLED, CRES	1	10362	
43		AN960C416	WASHER, PLAIN, 1/4, CRES	2	10362	
44		MS21045C4	NUT, LOCKING, 1/4, CRES	1	10362	
45	SCAT-8		SCAT HOSE, 2.0	12 IN		