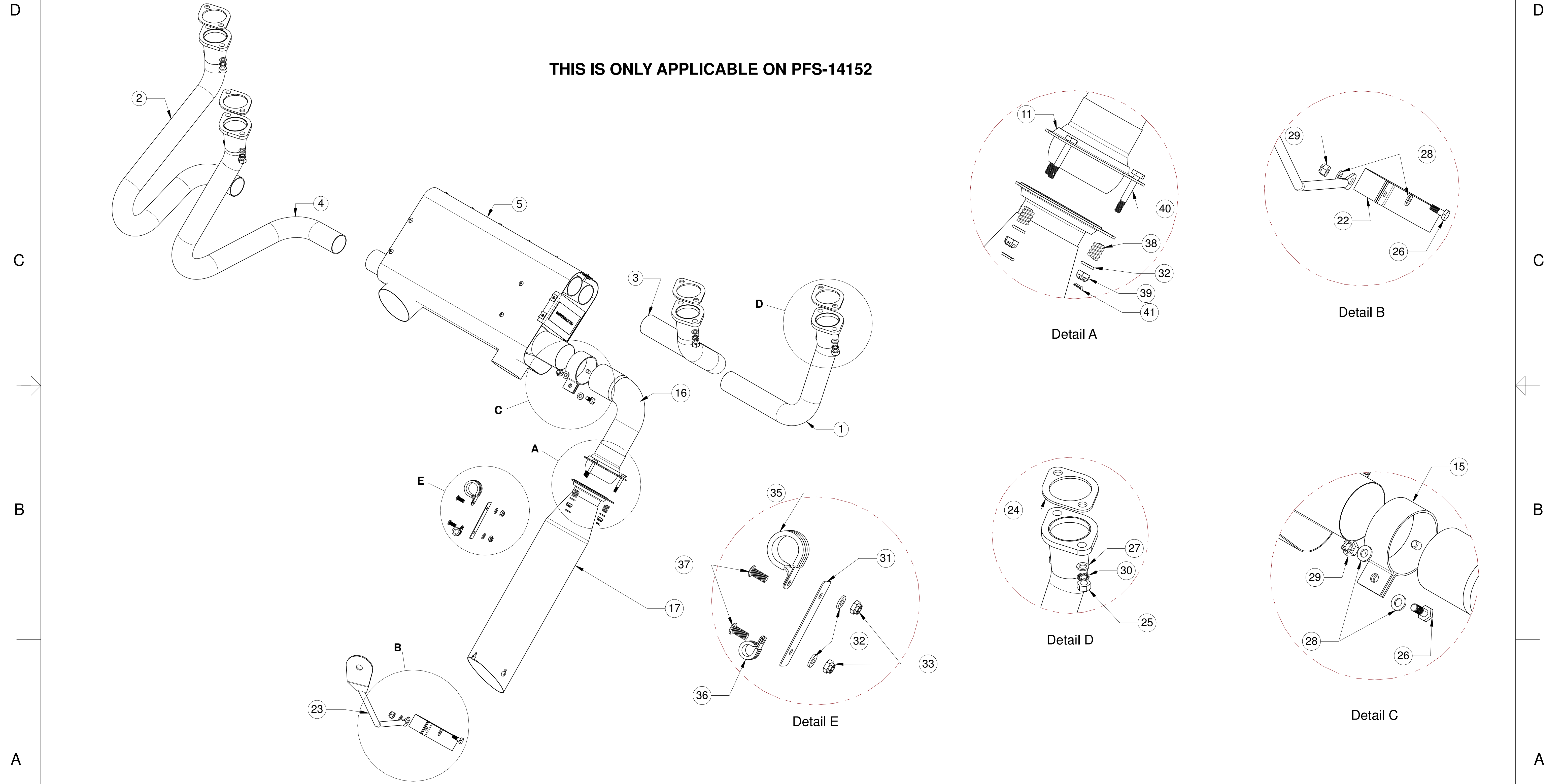



REVISIONS		
REV	DESCRIPTION	DATE

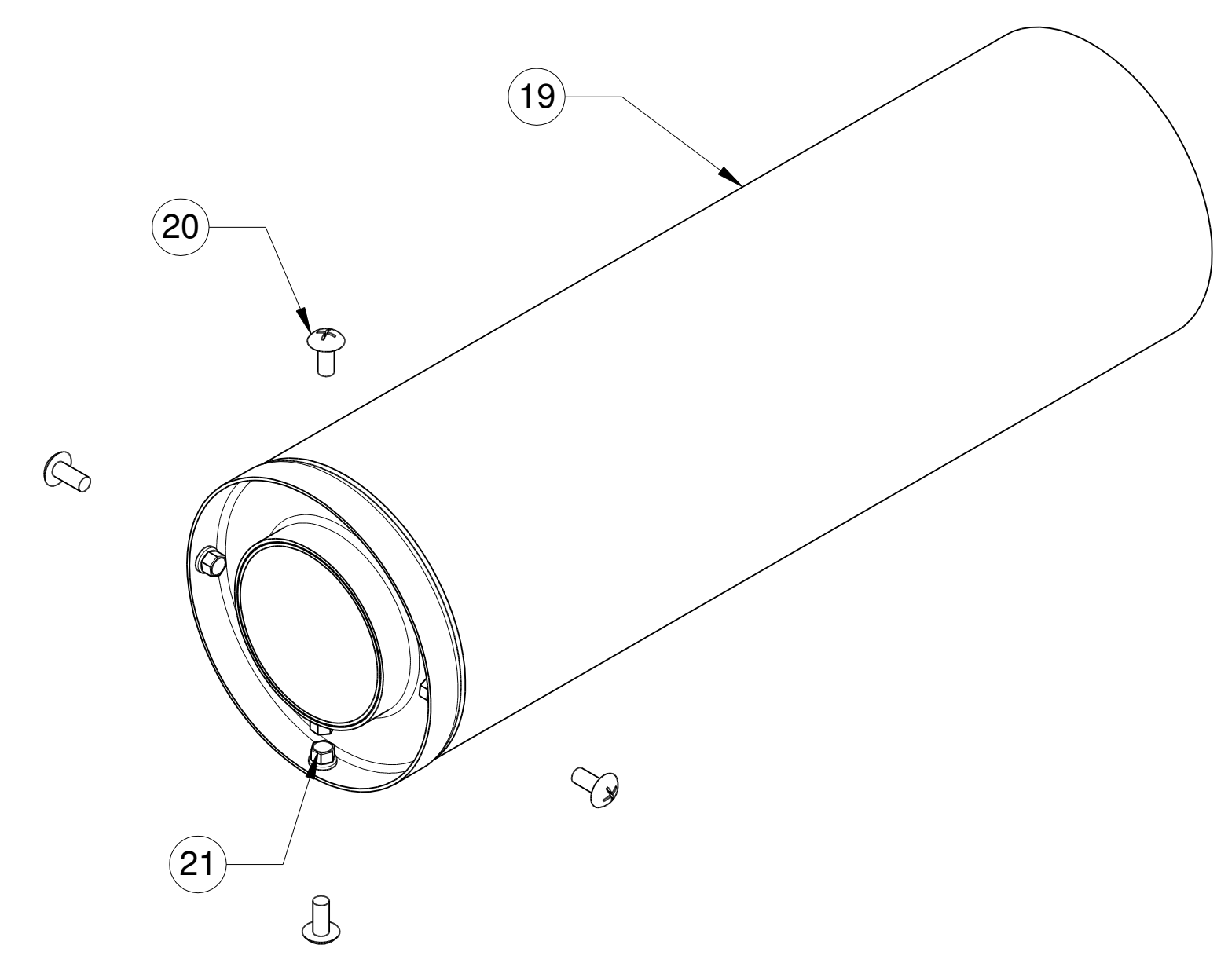
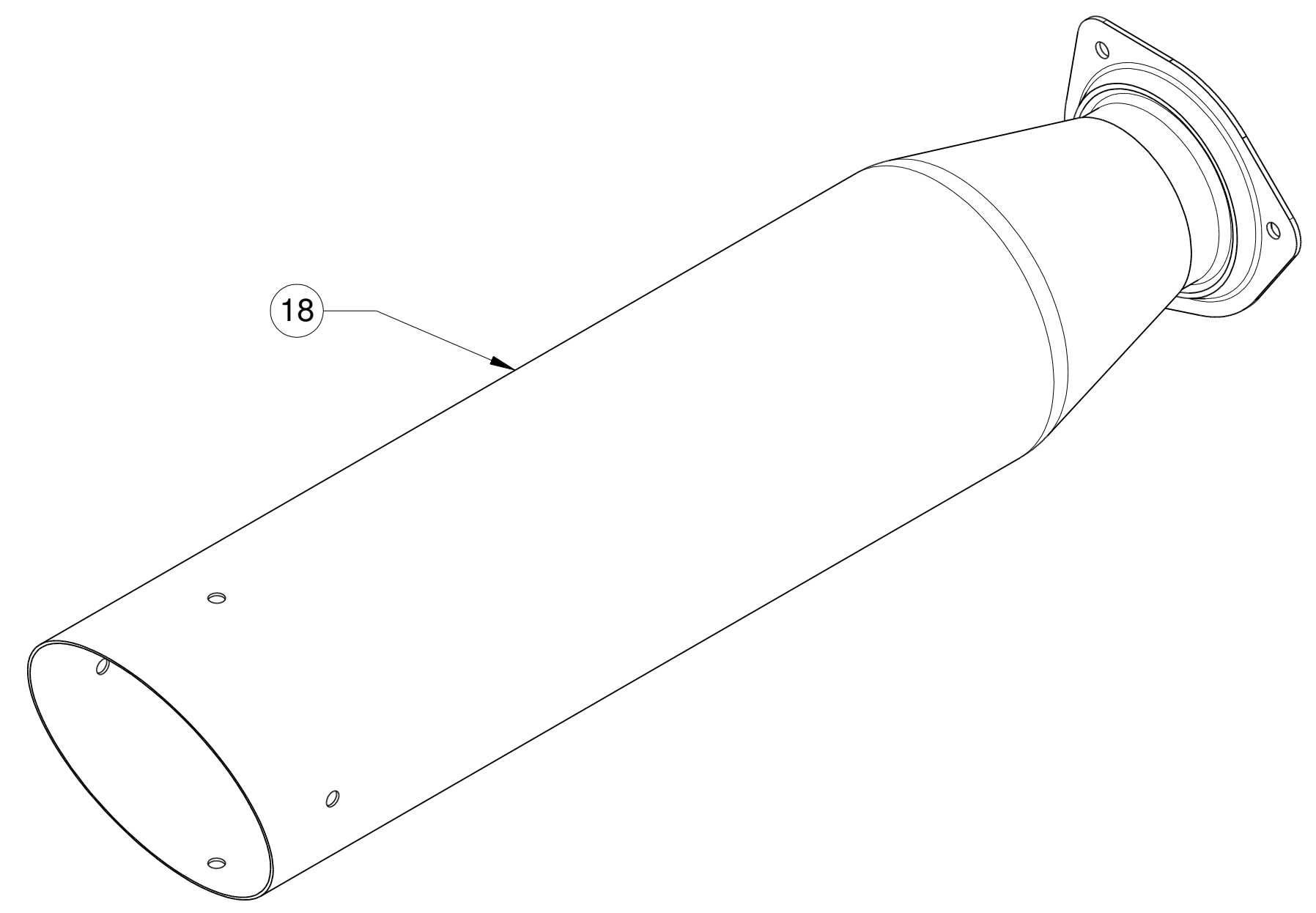
THIS IS ONLY APPLICABLE ON PFS-14152



ANY EQUIVALENT AVIAITON GRADE HARDWARE MAY BE USED

TOLERANCES EXCEPT AS NOTED XX ±0.1 0 ±2 XXX ±0.063 0.0 ±1 XXXX ±0.010 0.00 ±0.5	DRAWN ES	DATE 11/9/2018	POWER FLOW SYSTEMS, INC. 1585 AVIATION CENTER PKWY HANGAR 804 DAYTONA BEACH, FL 32114 
	CHECKED		
ALL INFORMATION CONTAINED IN THIS DRAWING IS PROPRIETARY TO POWER FLOW SYSTEMS, INC.	DIMENSIONS IN INCHES THIRD ANGLE		DWG NO. PFS-14152-IPC
	SIZE D	SCALE	DWG TITLE SYSTEM ASSEMBLY
			REV IR
			SHEET 1 OF 4

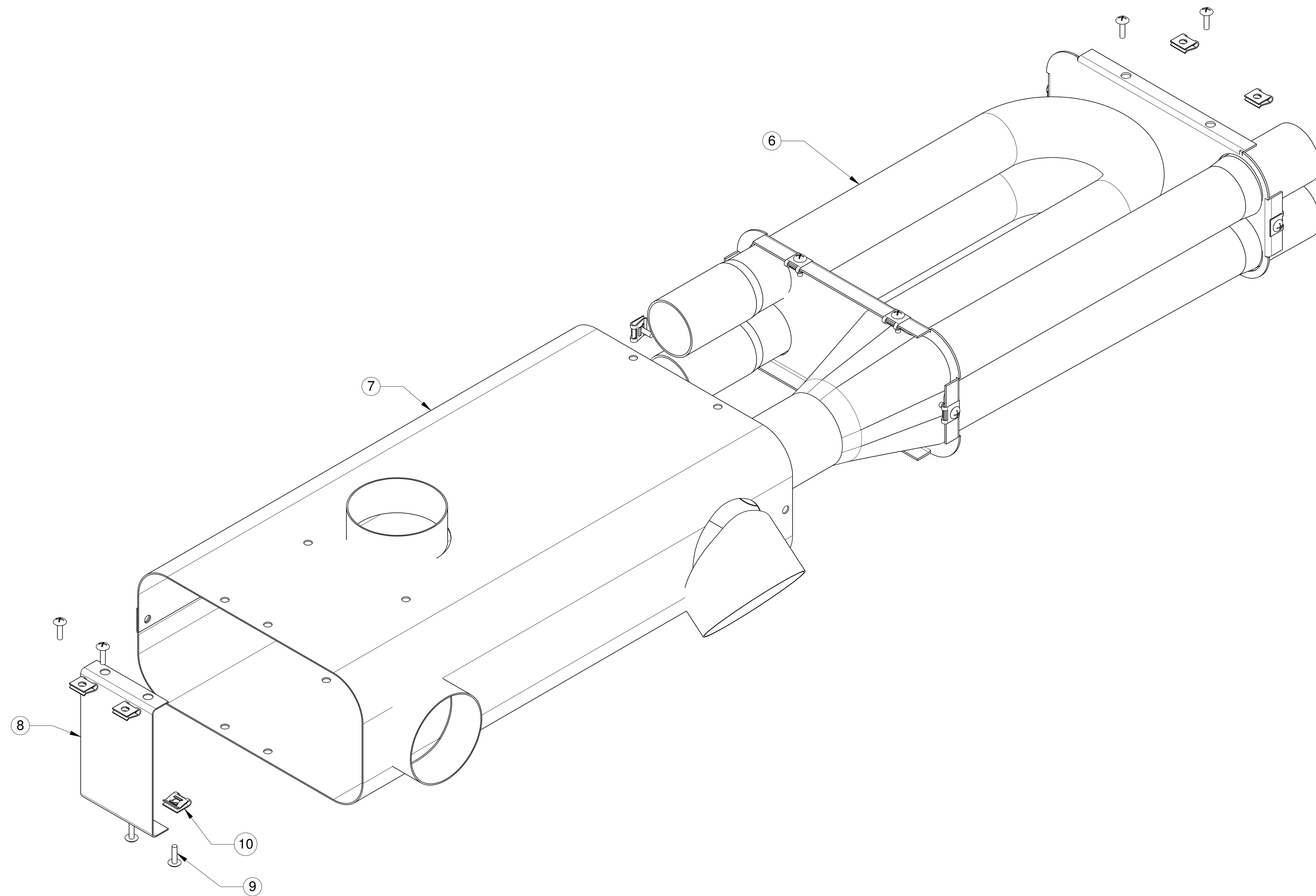
REVISIONS		
REV	DESCRIPTION	DATE




ANY EQUIVALENT AVIAITON GRADE HARDWARE MAY BE USED

TOLERANCES EXCEPT AS NOTED X.X --± 0.1 0 --± 2 X.XX --± 0.063 0.0 --± 1 X.XXX --± 0.010 0.00 --± 0.5	DRAWN ES	DATE 11/9/2018	POWER FLOW SYSTEMS, INC. 1585 AVIATION CENTER PKWY HANGAR 804 DAYTONA BEACH, FL 32114 	
	CHECKED	DIMENSIONS IN INCHES THIRD ANGLE		DWG NO. PFS-14152-IPC
ALL INFORMATION CONTAINED IN THIS DRAWING IS PROPRIETARY TO POWER FLOW SYSTEMS, INC.	SIZE D	SCALE	STOCK SIZE MATERIAL SHEET 2 OF 4	REV IR

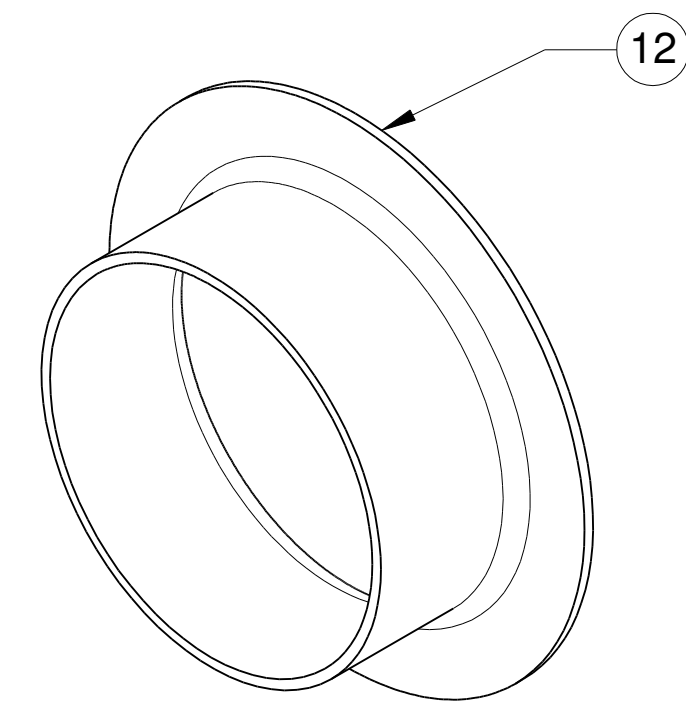
REVISIONS		
REV	DESCRIPTION	DATE



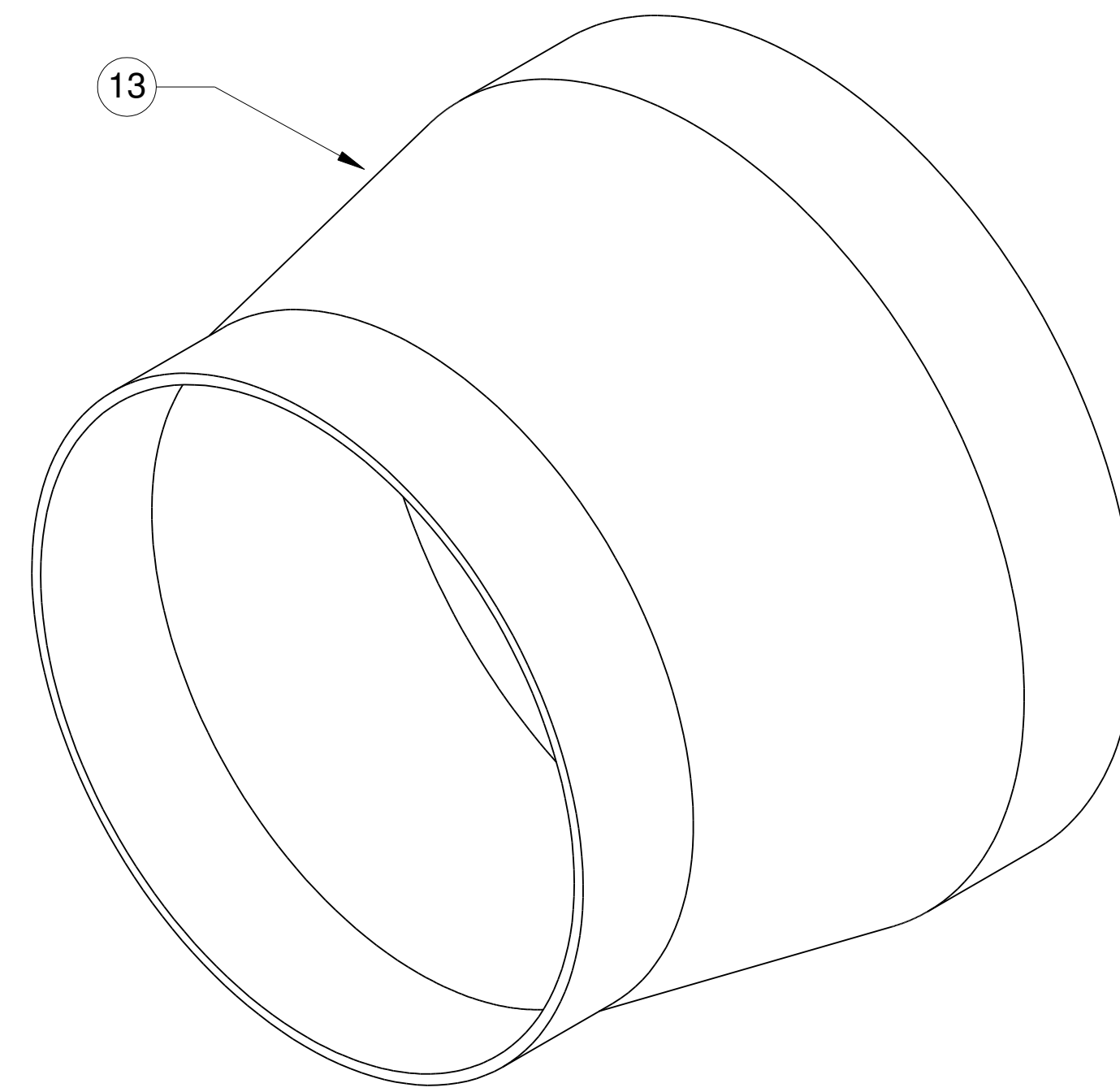
ANY EQUIVALENT AVIAITON GRADE HARDWARE MAY BE USED

TOLERANCES EXCEPT AS NOTED XX ±0.1 0 ±2 XXX ±0.063 0.0 ±1 XXXX ±0.010 0.00 ±0.5	DRAWN ES	DATE 11/9/2018	POWER FLOW SYSTEMS, INC. 1585 AVIATION CENTER PKWY HANGAR 804 DAYTONA BEACH, FL 32114 	
	CHECKED	DIMENSIONS IN INCHES THIRD ANGLE		DWG NO. PFS-14152-IPC
ALL INFORMATION CONTAINED IN THIS DRAWING IS PROPRIETARY TO POWER FLOW SYSTEMS, INC.	SIZE D	SCALE	STOCK SIZE MATERIAL	REV IR

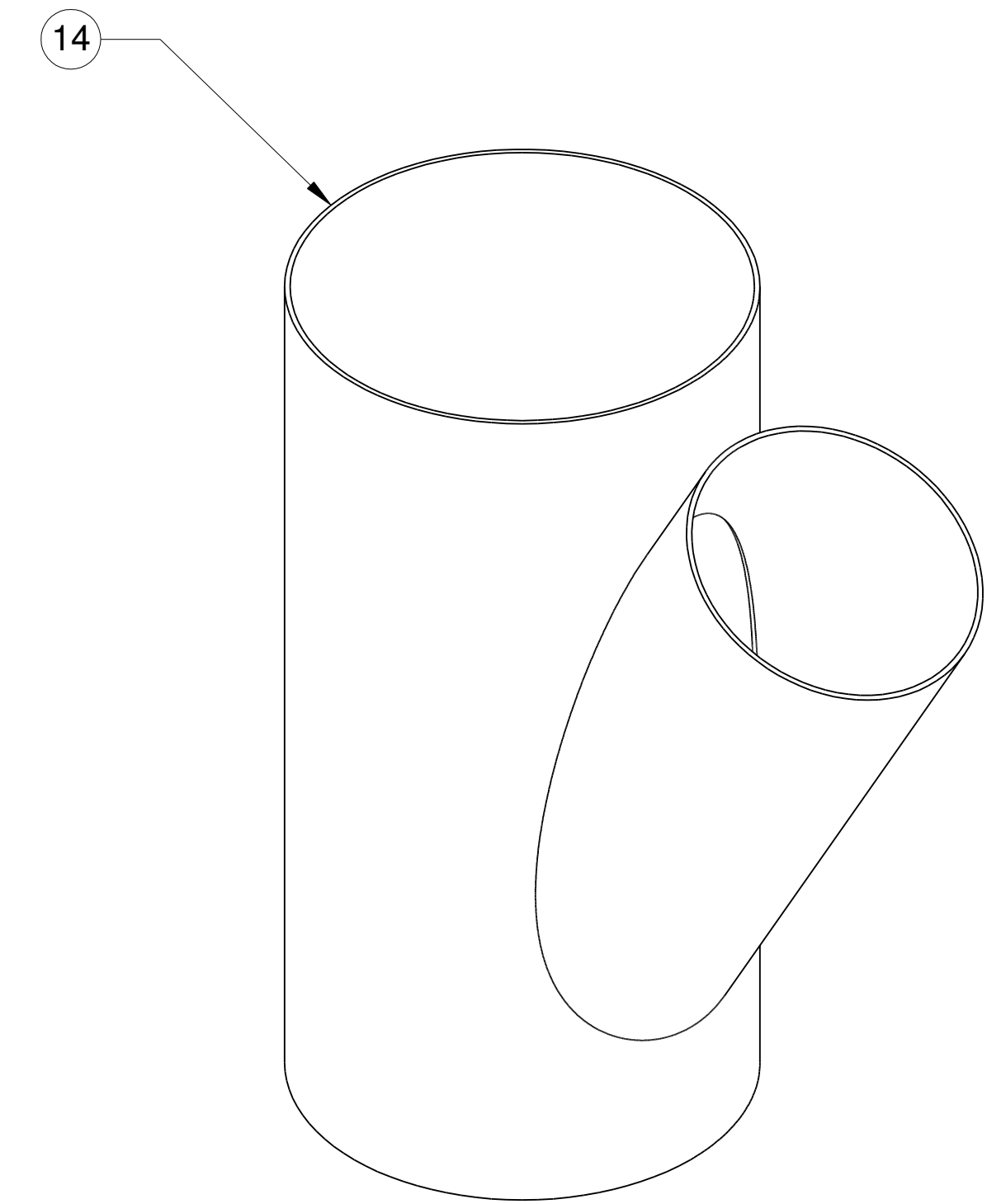
REVISIONS		
REV	DESCRIPTION	DATE



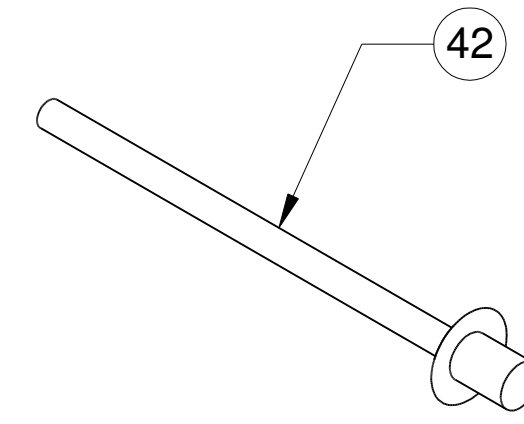
NOSE BOWL FLANGE




3" TO 2" REDUCER



SPLITTER



ANY EQUIVALENT AVIAITON GRADE HARDWARE MAY BE USED

TOLERANCES EXCEPT AS NOTED XX ±0.1 0 ±2 XXX ±0.063 0.0 ±1 XXXX ±0.010 0.00 ±0.5	DRAWN ES	DATE 11/9/2018	POWER FLOW SYSTEMS, INC. 1585 AVIATION CENTER PKWY HANGAR 804 DAYTONA BEACH, FL 32114 
	CHECKED		
ALL INFORMATION CONTAINED IN THIS DRAWING IS PROPRIETARY TO POWER FLOW SYSTEMS, INC.	SIZE D	SCALE	DWG NO. PFS-14152-IPC STOCK SIZE
			DWG TITLE OTHER PARTS MATERIAL REV IR SHEET 4 OF 4

PFS-14152 IPC BOM

NOTE: COMMONLY ORDERED PARTS ARE BOLDED

Item	Part Number	Description	Qty Per Assy	HW Pack #	Comment	
1	11630	HEADER #1	1			
2	12630	HEADER #2	1			
3	13630	HEADER #3	1			
4	14630	HEADER #4	1			
5	41510	SHROUDED COLLECTOR	1			
6	38000	COLLECTOR ASSEMBLY	1		INC. IN PFS-41510 OR PFS-38000	
7	51510	SHROUD SUBASSY	1		INC. IN PFS-41510 OR PFS-51510	
8	6801	SHROUD ENDPLATE	1		INC. IN PFS-41510 OR PFS-51510	
9	8RX1/2THBS/S	#8 STAINLESS STEEL SCREW	18		INC. IN PFS-41510, PFS-38000 OR PFS-51510	
10	D1274-8-1	TINNERMAN CLIP	18		INC. IN PFS-41510, PFS-38000 OR PFS-51510	
11	510	2 IN. MALE BALL JOINT FLANGE	1			
12	6525	FLANGE, 2.5 IN	1		ONLY A/C S/N MB-1 TO 480	
13	6585	REDUCER, 3.0 TO 2.5	1			
14	6586	SPLITTER, 3.0 TO 3.0 / 2.0	1		ONLY FOR A/C WITH 2.0 DEFROSTER	
15	7022	CLAMP, 2IN, PINNED, WIDE	1			
16	78103	INTERMEDIATE TUBE	1			
17	80061-CER	MUFFLER, INTERNAL GRUMMAN, CERAMIC	1			
17	80061	MUFFLER, INTERNAL GRUMMAN, POLISHED	1			
18	8061	TAILPIPE, INTERNAL GRUMMAN, POLISHED	1		INC. IN 80061	
19	8016	WRAPPED MUFFLER INSERT	1		INC. IN 80061 OR PFS-8016	
20	AN526C832R6	SCREW, #8 x 3/8, CRES	4		INC. IN 80061 OR PFS-8016	
21	MS21042L08	NUT, LOCKING, #8	4		INC. IN 80061 OR PFS-8016	
22	8030	CLAMP, MUFFLER, POLISHED	1			
23	90862	SUPPORT ROD, BEECH, COATED	1			
	10320	HW PACK, HEADERS AND CLAMPS	1			
24	77611	LYCOMING EXHAUST GASKET	4	10320		
25	94819A046	ASTM F594 S/S HEX NUT 5/16-18	8	10320		
26	AN4C5A	BOLT, 1/4IN, UNDRILLED, CRES	2	10320		
27	AN960-516	WASHER, PLAIN, 5/16	8	10320		
28	AN960C416	WASHER, PLAIN, 1/4, CRES	4	10320		
29	MS21045C4	NUT, LOCKING, 1/4, CRES	2	10320		
30	MS35333-41	WASHER LOCKING, 5/16	8	10320		
	10351	HW PACK, BEECH	1			
31	201	STRAP, ALUMINUM	1	10351		
32	AN960C10	WASHER, PLAIN, 3/16, CRES	2	10351		
33	MS21045C3	NUT, LOCKING, 3/16, CRES	2	10351		
35	MS21919WH14	CLAMP, ADEL, #14	1	10351		
36	MS21919WH6	CLAMP, ADEL, 3/8	1	10351		
37	MS51958-63	SCREW, PANHEAD, #10x1/2"	2	10351		
	10360	HW PACK, BALLJOINT	1			
38	33703	BALL JOINT SPRING	3	10360		
39	AN310C3	NUT, CASTLE, 3/16, CRES	3	10360		
40	AN3C12	BOLT, 10-32, CRES	3	10360		
	32	AN960C10	WASHER, PLAIN, 3/16, CRES	6	10360	
41	MS24665-153	COTTER PIN	3	10360		
42	CCP-32	RIVET, BLIND STAINLESS, 3/32", 0.04"	6			